

garuda chemicals

Office:

15/605-606 Mayuresh C.H.S., Majaswadi MHADA Colony, Off Mahakali Caves Road, Andheri (East), Mumbai-400 093. India.

Tel.

+91.22.2820.1198 • +91.22.2821.5596

Fax

+91.22.2820.1201

Email

gcsales@garudachem.com

Factory:

B-46 M.I.D.C., Lote-Parshuram, Tal.: Khed, Dist.: Ratnagiri. 415 722 Maharashtra. India

Tel.

+91.2356.27.2157

Email

gcfactory@garudachem.com

AROMATIC CHEMICAL

Product:**Aldehyde C-16****CAS #:**

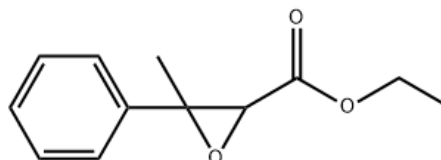
77-83-8

Synonyms:

3-Methyl-3-Phenyloxirane Carboxylic Acid Ethyl Ester; Ethyl Methyl Phenyglycidate; Beta-Epoxy-Beta-Methyl Hydrocinnamate; Ethyl 2,3-Epoxy-3-Methyl-3-Phenyl Propionate; Strawberry Aldehyde; Mixture of Cis and Trans;

Molecular Formula: $C_{12}H_{14}O_3$ **Molecular Weight:**

206.2408

Structural Formula:**Description:**

Colourless to pale yellow liquid

Odour:

Powerful, recalling strawberries

Specific gravity:

1.088 to 1.112 @ 25.0°C.

Refractive Index:

1.502 to 1.505 @ 25.0°C.

Flash Point:

>100.0°C.

Solubility:

Soluble in 4 parts of alcohol practically insoluble in water

Assay (Ester Value):

98.0% min.

Assay, Typical:

98.0% min. (by GC)

Related Information

We offer packing customised to customer-requirement. Standard packing for this product is 200.0 kilos net, new, epoxy coated M.S. barrels

We mostly keep small quantities of this material in ready stock.

Please enquire for updated information on delivery schedule, pricing and payment terms to <gcsales@garudachem.com>

H.T.S.#:

2918.9900

Shipping Name:

ENVIRONMENTALLY HAZARDOUS SUBSTANCE, LIQUID, N.O.S. (Contains Ethyl 2,3-epoxy-3-phenylbutyrate)

Hazard Class:

9

U.N.Number:

UN3082

Packing Group:

III

Known Applications:

Ethyl 3-Methyl-3-phenylglycidate, also known as strawberry aldehyde, is commonly used in the flavor industry for artificial fruit flavors, in particular strawberry