

# garuda chemicals

**Office:**

15/605-606 Mayuresh C.H.S., Majaswadi MHADA Colony, Off Mahakali Caves Road, Andheri (East), Mumbai-400 093. India.

**Tel.**

+91.22.2820.1198 • +91.22.2821.5596

**Fax**

+91.22.2820.1201

**Email**

gcsales@garudachem.com

**Factory:**

B-46 M.I.D.C., Lote-Parshuram, Tal.: Khed, Dist.: Ratnagiri. 415 722 Maharashtra. India

**Tel.**

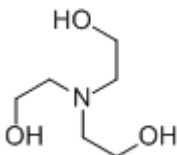
+91.2356.27.2157

**Email**

gcfactory@garudachem.com

## ORGANIC AMINE HALIDE

<b>Product:</b>	<b>Triethanolamine Hydrochloride</b>
<b>CAS #:</b>	637-39-8
<b>Synonyms:</b>	Tris (hydroxyethyl) Amine Hydrochloride; 2,2',2''-Nitrilotriethanol Hydrochloride
<b>Molecular Formula:</b>	C <sub>6</sub> H <sub>15</sub> O <sub>3</sub> N.HCl
<b>Molecular Weight:</b>	185.65 HCl

**Structural Formula:**

<b>Description:</b>	Colourless to white crystalline powder, hygroscopic
<b>Sulphated Ash:</b>	0.5% max.
<b>Moisture Content:</b>	0.5% max.
<b>Melting Point:</b>	176.0 to 177.0°C.
<b>Assay:</b>	99.0% min.

## Related Information

We offer packing customised to customer-requirement. Standard packing for this product is 25.0 kilos net, new, polylined, kraft-paper bags.

We mostly keep small quantities of this material in ready stock.

Please enquire for updated information on delivery schedule, pricing and payment terms to <gcsales@garudachem.com>

<b>H.T.S.#:</b>	2922.1390.00
<b>Known Applications:</b>	Pharmaceutical applications, Refractory cements, Oil-well chemicals, organic synthesis reactions